

If your construction project will include any grading of soil on the site or is near a known geologic hazard, a Grading and Erosion Control Permit may be required. For information on the Grading and Erosion Control Permit, contact the Astoria Engineering Division at 503-338-5173.

The City of Astoria has compiled a series of informational brochures to help you determine if you will need some of the more common permits. These are available both on the City's website (www.astoria.or.us) under the Community Development Department link and in the front lobby of Astoria's City Hall.

Certain types of construction may require additional permits, such as design review, flood elevation certification, shoreline environmental impact review, etc. Contact the Planning Division at 503-338-3183 for more information.

Once you have verified that the zoning of your property and the proposed use of your business are compatible, you should contact the City of Astoria Building Codes Division (503-325-1004) to help you determine which building permits and

KEY INFORMATION REGARDING STARTING A BUSINESS IN ASTORIA

DEVELOPMENT CONTACT INFORMATION

City of Astoria:
 Astoria Planning Division 503-338-5183
 Astoria Building Codes Division 503-325-1004
 Astoria Engineering Division 503-338-5173
 Astoria Finance Department 503-325-5821

Clatsop County:
 Assessment and Taxation 503-325-8522
 Electrical Building Permits Division 503-338-3697
 Public Health (including food service) 503-338-3600x1927

Local Utilities:
 Pacific Power 866-870-3419
 Northwest Natural Gas 800-422-4012
 CenturyLink 877-744-4416
 Charter 888-438-2427
 City of Astoria Water and Sewer 503-325-5172
 Western Oregon Waste 503-861-0578

State of Oregon:
 DEQ Portland 503-229-5263
 Dept. of Licensing 503-986-2200
 Dept. of Revenue 503-378-4988
 Dept. of Transportation – Astoria Office 503-325-7222
 Water Resources 503-842-2413x119
 Dept. of Agriculture (food service) 503-325-8086
 Oregon Liquor Control Commission 503-861-3912
 Business Information Center 503-986-2200
 Oregon Employment Dept. 503-325-4821

Other:
 Clatsop Economic Development Resources 503-338-2342
 Astoria-Warrenton Chamber of Commerce 503-325-6311
 Astoria Downtown Historic District Assn. 506-791-7940
 Business Oregon 503-986-0123



3. IF I AM DOING CONSTRUCTION, WHICH BUILDING CODES WILL I NEED TO MEET? DO I NEED TO OBTAIN PERMITS FOR CONSTRUCTION?

When you have verified that the zoning of your property and the proposed use of your business are compatible, you should contact the City of Astoria Building Codes Division (503-325-1004) to help you determine which building permits and

Once you have verified that the property is located within the city limits of Astoria and have determined the types of business activities you wish to conduct on the property, you should next check with the Astoria Planning Division to ensure that your use or activity complies with the applicable zone and zoning regulations. Zoning in Astoria delineates the uses allowed on properties, depending on the zoning, your particular business may, or may not, be allowed. Zoning also includes certain requirements, such as building height, size of lots, setbacks to property lines, parking, signage, and other provisions. You can check the Astoria Development Code and Zoning Map at the City of Astoria's website (www.astoria.or.us) under the Astoria Maps (GIS) link. If you need assistance verifying these items, call the Astoria Planning Division at 503-338-5183 early in the process to avoid any unnecessary delays.

2. WHAT IS THE ZONING OF THE PROPERTY AND DOES IT PERMIT YOUR PROPOSED USE?

Of Astoria's website (www.astoria.or.us) under the Astoria Maps (GIS) link. You may also call the Astoria Planning Division at 503-338-5183 to speak to a staff person who can verify the property location.

HOW TO CONTACT US

Nancy Ferber 503-338-5183
City Planner
nferber@astoria.or.us

Lisa Ferguson 503-325-1004
Building Codes Permit Technician
lferguson@astoria.or.us

Ben Small 503-325-1004
Building Official
buildingofficial@astoria.or.us

Administrative Assistant 503-338-5183



CITY OF ASTORIA
 Founded 1811 • Incorporated 1856

Community Development Department
 1095 Duane Street, Astoria OR 97103
 503-338-5183 • Fax 503-338-6538
buildingdivision@astoria.or.us

1. WHERE IS THE PROPERTY LOCATED?

For all of the information in this brochure to apply to you, your business must be located within Astoria city limits. So, the first step is to verify if the property is within the city limits of Astoria. If it is, you will be coordinating with the City of Astoria, and in some instances, Clatsop County, to plan, license, permit, and open your business. A map of the Astoria city limits can be found at the City

The staff at Clatsop Economic Development Resources, in particular, can be very helpful to someone starting a new business in Astoria. They offer a number of services, including assistance with business plan development.

Once you have a business plan and have selected some possible properties on which you would like to site your business, the following questions should be some of the first you consider:

If you are looking to locate a new business in the City of Astoria, this brochure will help you get started. Keep in mind, no two developments are the same, and your site may have unique attributes. However, the City of Astoria is eager to support new business development and is here to help you.

Throughout the process of starting your own business, you may come across questions or concerns that are difficult to address. The agencies listed below are a partial list of those who are willing to assist you in understanding the local business community.

Clatsop Economic Development Resources
 Astoria-Warrenton Chamber of Commerce
 Astoria Downtown Historic District Assn.
 Business Oregon
 503-338-2342
 503-325-6311
 503-791-7940
 503-986-0123



Want to Start a Business in Astoria?

4. DO I NEED A BUSINESS LICENSE TO HAVE A BUSINESS IN ASTORIA?

In order to have a business, an office, or conduct any type of business operations within the city limits of Astoria, you will need to obtain an Occupational Tax/Business License. The cost of the license is determined by the number of individuals employed, including owners, officials, full-time, and part-time employees. Applications can be found on the City of Astoria's website (www.astoria.or.us) under Forms & Permits, Finance Department. Forms can also be obtained from the Planning Division on the first floor of Astoria City Hall.

5. ARE THERE ANY OTHER TYPES OF PERMITS I SHOULD KNOW ABOUT FOR MY BUSINESS?

Prior to installing signage for your business, a sign permit will need to be obtained from the Astoria Planning Division. Additionally, if a business wishes to locate portable signs, tables, and/or chairs on public sidewalks, permits for these items will also need to be obtained from the Planning Division. There could be other permits needed depending on the nature and/or location of your proposed business. When making inquiries about starting a business, City staff will let you know if any other permits are required. If you have any questions, contact the Planning Division at 503-338-5183.

6. ARE THERE ANY OTHER ISSUES I SHOULD BE AWARE OF WHEN STARTING MY BUSINESS?

If you are a restaurant, or will be serving or handling food, please contact: Clatsop County Health Department – Environmental Health, 503-338-

3600x1927 and Oregon Department of Agriculture – Food Safety, 503-325-8086.

If you will be serving or selling liquor as a part of your business, a liquor license from the Oregon Liquor Control Commission (OLCC) will need to be obtained. To start the process, you will need to contact OLCC. Once the liquor license application has been processed by the OLCC, the application will need to be submitted to the City of Astoria Finance Department for City review. The application will be reviewed internally and will be scheduled for consideration at a City Council meeting. For questions about the liquor license process, contact OLCC at 503-861-3912 or the City of Astoria Finance Department at 503-325-5821.

If your business site abuts a State of Oregon maintained highway and you have questions about driveway locations, contact Oregon Department of Transportation Permit Office, 503-325-5853.

7. ARE THE UTILITIES SET UP CORRECTLY FOR MY BUSINESS NEEDS?

Check your site to ensure that it is capable of providing the type and amount of utilities you will need. You may need to connect to a certain utility, or upgrade the size of your connection. For questions regarding this, contact the appropriate service provider using the numbers provided on the front page of this brochure under Development Contact Information.

8. MY BUSINESS IS GOING TO BE DOWNTOWN – ARE THERE PARKING CONSIDERATIONS?

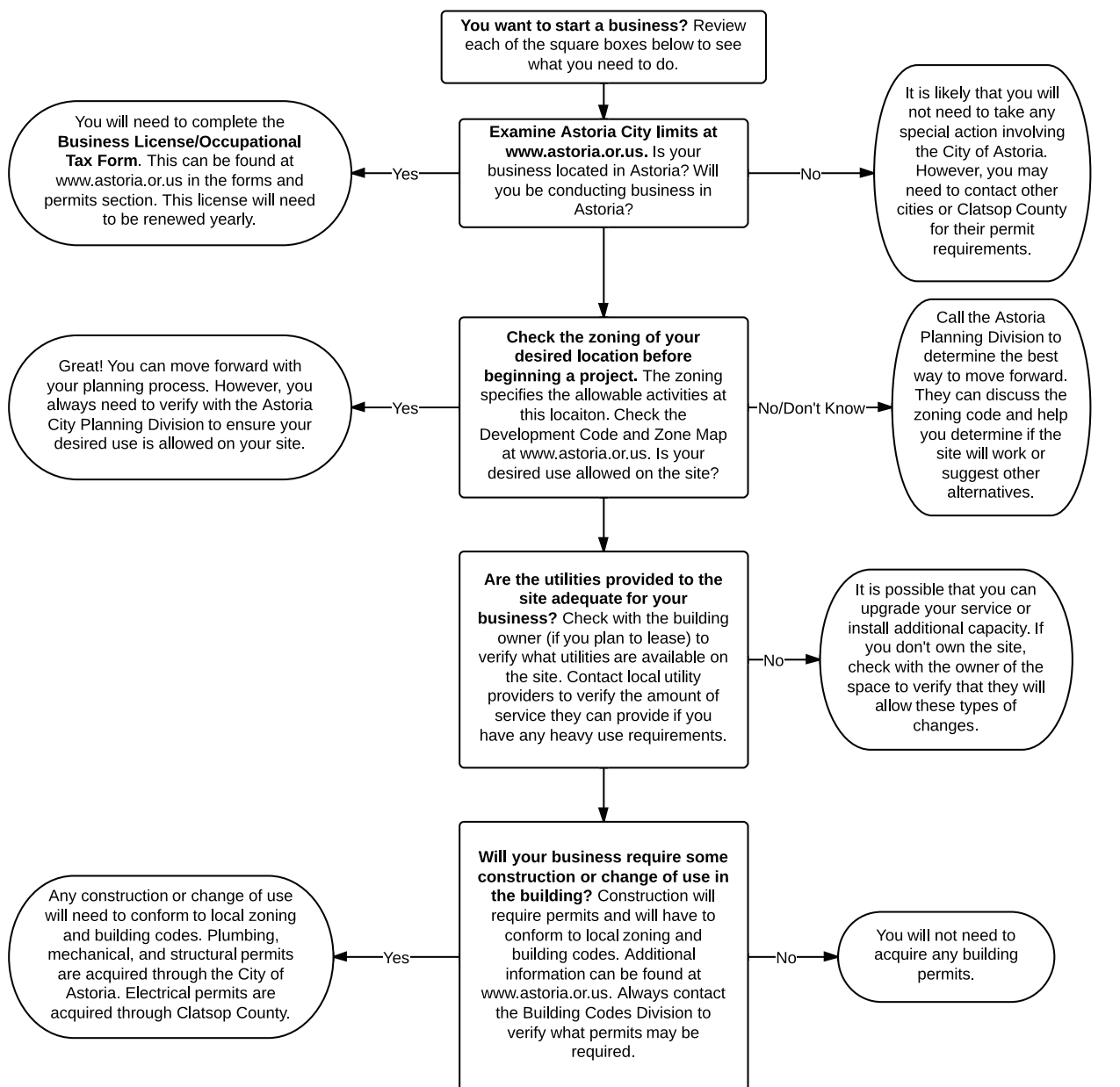
Parking in the downtown is regulated Monday through Saturday from 10:00am to 4:30pm. A

parking district map can be found at the City of Astoria's website (www.astoria.or.us) under Finance Department. The intent of the parking regulations is to provide parking for customers by requiring employees to park outside of the parking district. If your site is located in the Downtown Parking District, you must complete the Downtown Employee, Student, Resident Parking Vehicle Data form, which is a part of the Occupational Tax/Business License application.

9. DOES THE CITY HAVE ANY FINANCIAL OR OTHER AID AVAILABLE TO HELP WITH MY BUSINESS?

Depending on your location, there may be grant and/or loan opportunities available through the City of Astoria and other City partners. Some of these include façade renovation grants, historic restoration grants, etc. Advance Astoria, the City's Economic Development Strategy, outlines those business sectors which the City is promoting for job growth. Check out the project website at http://www.astoria.or.us/CommDev_Projects.aspx. or call the City of Astoria Planning Division at 503-338-5183 for additional information.

YOU'RE STARTING A BUSINESS, NOW WHAT?



ABOUT US

The Community Development Department is responsible for economic development, land use planning, zoning administration, building inspection, and historic preservation. The Department provides staff support to the Planning Commission (APC), the Historic Landmarks Commission (HLC), the Design Review Committee (DRC), the Traffic Safety Advisory Committee (TSC), and project advisory committees such as Advance Astoria. The Department administers both the City Comprehensive Plan and the Development Code. The Department also administers the City's Building Inspection and Code Enforcement Program.

For further information please visit our website at www.astoria.or.us.



CITY OF ASTORIA
Founded 1811 • Incorporated 1856

"Where Preservation Meets Progress"