

NOTES:

1. ASPHALT SHALL BE LEVEL 2, 1/2" DENSE HMAC WITH THE FOLLOWING THICKNESS:  
 3" MIN. ON RESIDENTIAL LOCAL STREETS.  
 4" MIN. ON RESIDENTIAL COLLECTOR AND MIXED USE STREETS.  
 4" MIN. IN COMMERCIAL AND INDUSTRIAL AREAS.
2. SEE STANDARD DETAIL ST-2 FOR STANDARD WIDTH DIMENSIONS.
3. SOIL TESTING TO DETERMINE STRUCTURAL SECTION MAY BE REQUIRED BY THE CITY ENGINEER.
4. UNSUITABLE SUBGRADE MATERIAL SHALL BE REMOVED AND REPLACED WITH COMPACTED 2.5"-0" CRUSHED ROCK AT ENGINEER'S DIRECTION.



**City of Astoria**  
**Public Works Department**  
 1095 Duane Street

**Street Cross Section Detail**

Date Adopt. 11/01/12

Date Rev. 11/20/15

DWG. NO.

Dwg. Name: ST-1 Street Cross Section.dwg

**ST-1**

SEE CITY OF ASTORIA TSP ADOPTED  
APRIL 21, 2014 - VOLUME 1, SECTION 6  
"STANDARDS"



**City of Astoria**  
**Public Works Department**  
1095 Duane Street

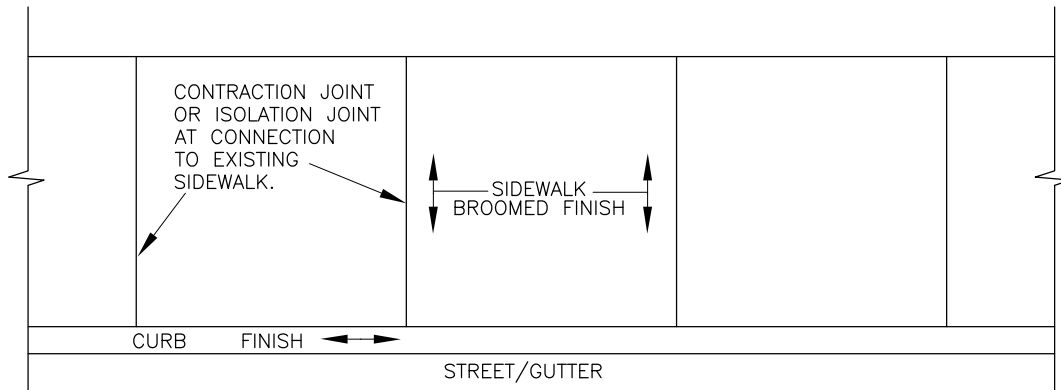
**Typical Street Widths**

**Date Adopt.** 11/01/12 | **Date Rev.** 07/24/14

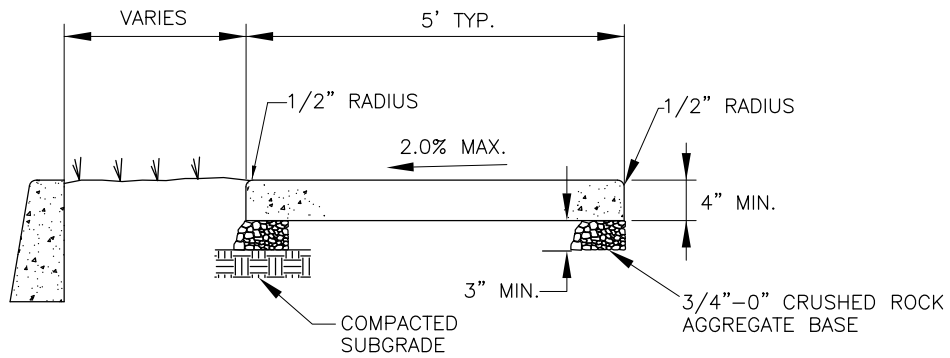
**Dwg. Name:** ST-2 Typical Street Widths.dwg

DWG. NO.

**ST-2**



PLAN



PROFILE

NOTES:

1. PORTLAND CEMENT CONCRETE SHALL ATTAIN A 28-DAY COMPRESSIVE STRENGTH OF 3300 P.S.I.
2. CONTRACTION JOINTS SHALL BE PLACED SO AS TO MAKE SQUARE BLOCKS FOR WALKS UP TO 8' WIDE AND ALSO AT ALL CHANGES IN DIRECTION AND POINTS OF CURVATURE. JOINT SHALL BE 1/8" TO 1/4" WIDE WITH A MINIMUM DEPTH OF 1/3 OF THE CONCRETE THICKNESS.
3. ISOLATION JOINTS SHALL BE PLACED AT CONNECTIONS TO EXISTING SIDEWALK, EDGES OF DRIVEWAYS AND ALL STRUCTURES WITHIN SIDEWALK. JOINTS SHALL CONSIST OF A PREFORMED FILLER MATERIAL WITH MINIMUM 1/2" THICKNESS.



**City of Astoria**  
**Public Works Department**  
 1095 Duane Street

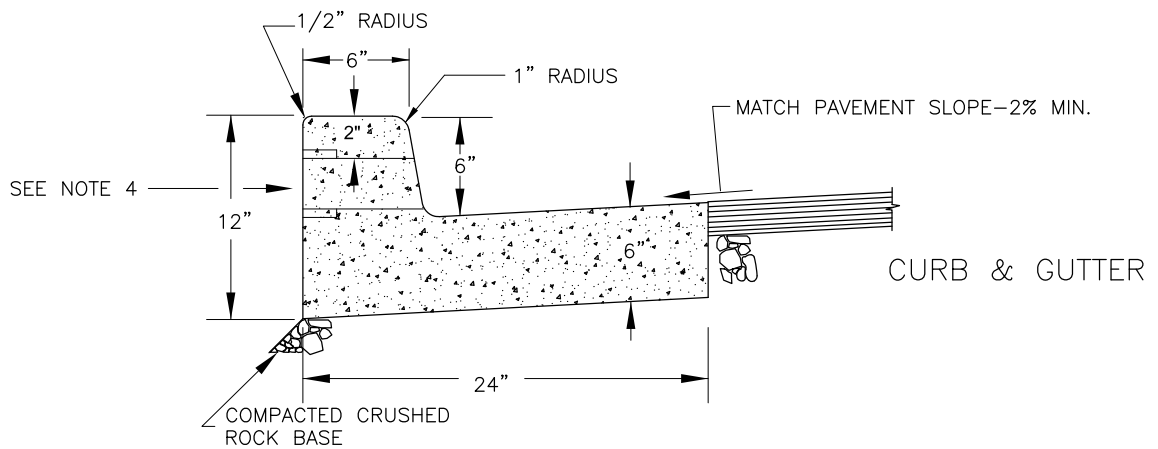
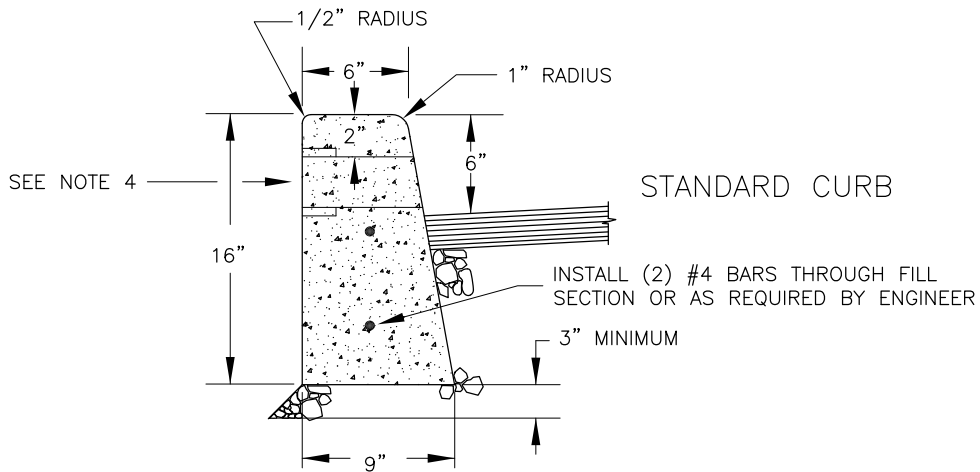
**Sidewalk Detail**

Date Adopt. 11/01/12      Date Rev. 11/10/15

Dwg. Name: ST-3 Sidewalk.dwg

DWG. NO.

**ST-3**



NOTES:

1. PORTLAND CEMENT CONCRETE SHALL ATTAIN A 28-DAY COMPRESSIVE STRENGTH OF 3300 P.S.I..
2. CONTRACTION JOINTS SHALL BE PLACED AT 15 FOOT MINIMUM INTERVALS WITH 1 1/2" DEPTH. MATCH SIDEWALK JOINTS.
3. PLACE CONTRACTION JOINT IN CURB OVER CENTER OF PIPE EXTEND PIPE TO BACK OF SIDEWALK IF SIDEWALK IS ADJACENT TO CURB.
4. DRAINAGE BLOCKOUT 3" I.D. PLASTIC PIPE W/BELL. LOCATED AS DIRECTED IN THE FIELD. GENERALLY NOT LESS THAT 2 PER LOT.



**City of Astoria**  
**Public Works Department**  
 1095 Duane Street

**Curb Detail**

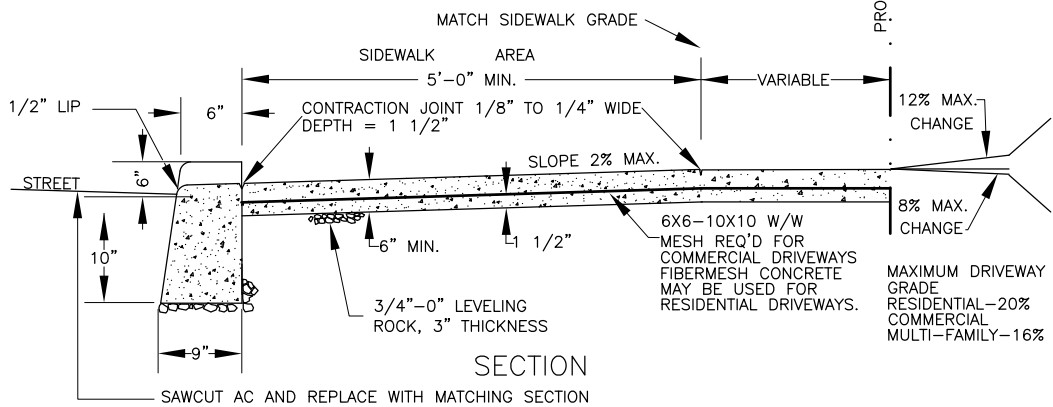
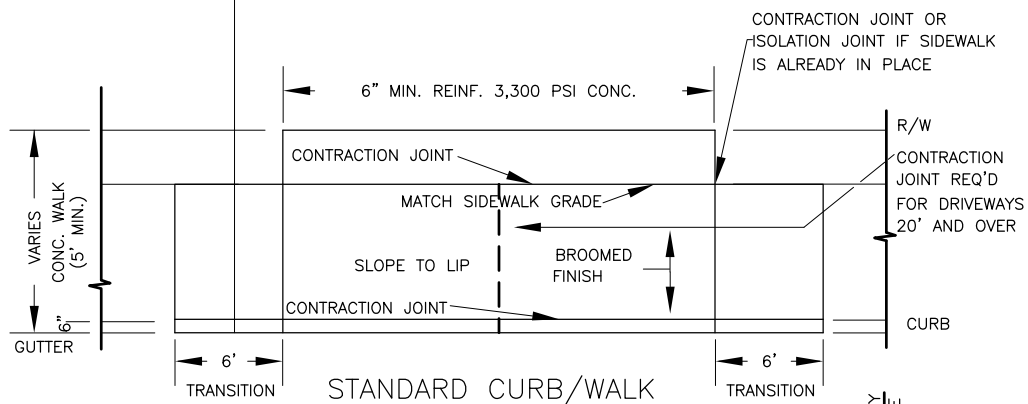
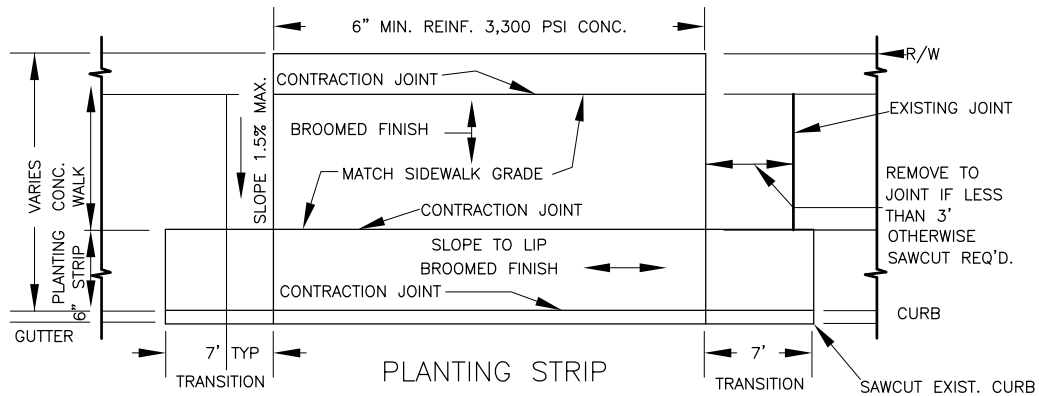
Date Adopt. 11/01/12

Date Rev. ----

DWG. NO.

**ST-4**

Dwg. Name: ST-4 Curb.dwg



**City of Astoria**  
**Public Works Department**  
 1095 Duane Street

**Driveway Apron Detail**

Date Adopt. 11/01/12

Date Rev. 11/10/15

DWG. NO.

Dwg. Name: ST-5 Driveway Apron.dwg

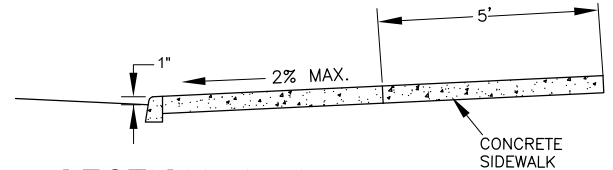
**ST-5**

CURB AND  
SIDEWALK

PUBLIC ROAD

RIGHT-OF-WAY

15' MIN. RADIUS



SECTION A-A

TRUNCATED DOMES  
SEE ODOT STD. DETAIL  
RD759

1" EXPOSURE

PCC CONC. APRON  
STRUCTURAL SECTION TO  
MATCH DETAIL ST-5

A.C. OR P.C.C.  
DRIVEWAY

VARIES

A

A

CONTRACTION JOINT

0" LIP

0" LIP

MAINTAIN BACK OF SIDEWALK GRADE

TAPER CURB

TRUNCATED DOME  
SEE ODOT STD.  
DETAIL RD759

6" CURB

15' MIN. RADIUS

INSTALL SIDEWALK (DETAIL ST-3)

PLANTING STRIP  
SIDEWALK

LANDSCAPED PLANTING STRIP

NOTES:

THIS TYPE OF APPROACH TO BE USED FOR HIGH VOLUME  
TRAFFIC GENERATORS WITH APPROVAL OR AS REQUIRED BY  
THE CITY ENGINEER.



**City of Astoria**  
**Public Works Department**  
1095 Duane Street

**Curb Return Driveway Detail**

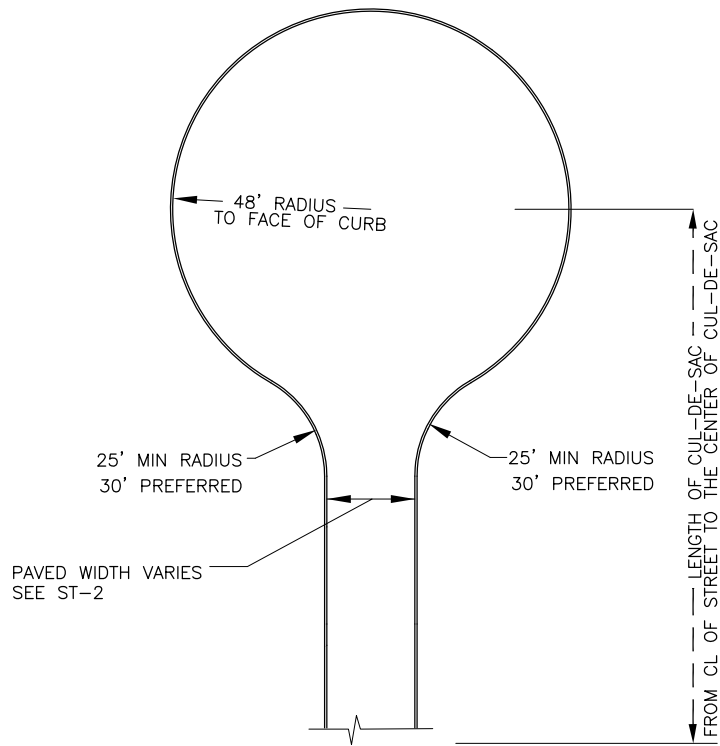
Date Adopt. 11/01/12

Date Rev. 11/10/15

DWG. NO.

Dwg. Name: ST-6 Curb Return.dwg

**ST-6**



NOTES:

1. LENGTH OF CUL-DE SAC NOT TO EXCEED 400 FEET
2. NO PARKING SIGNS REQUIRED AROUND BULB OF CUL-DE-SAC
3. THE DIMENSION OF THE CUL-DE-SAC BULB MAY BE REDUCED IF ADDITIONAL FIRE SUPPRESSION IS PROVIDED. FIRE SUPPRESSION MUST BE APPROVED BY THE FIRE MARSHAL.



**City of Astoria**  
**Public Works Department**  
 1095 Duane Street

**Cul-de-Sac Detail**

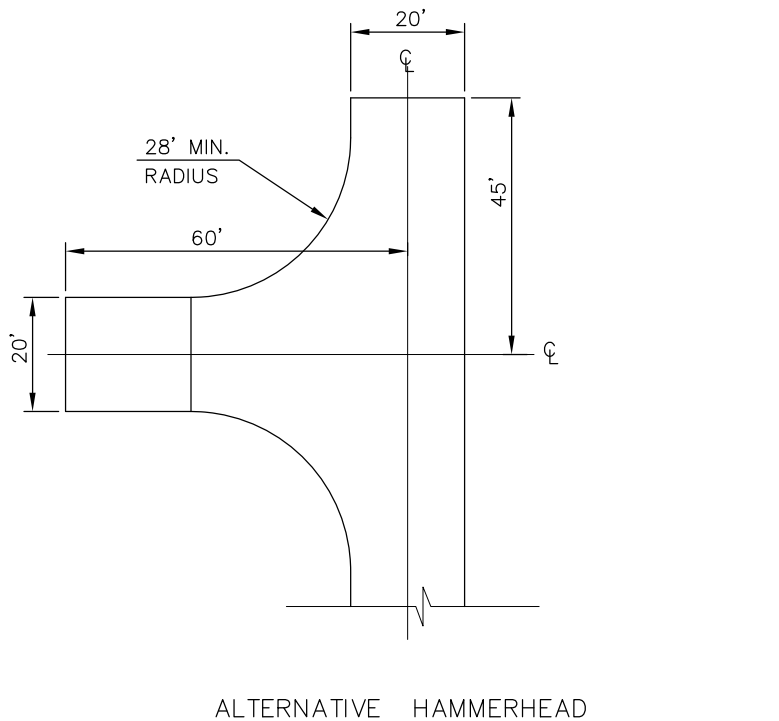
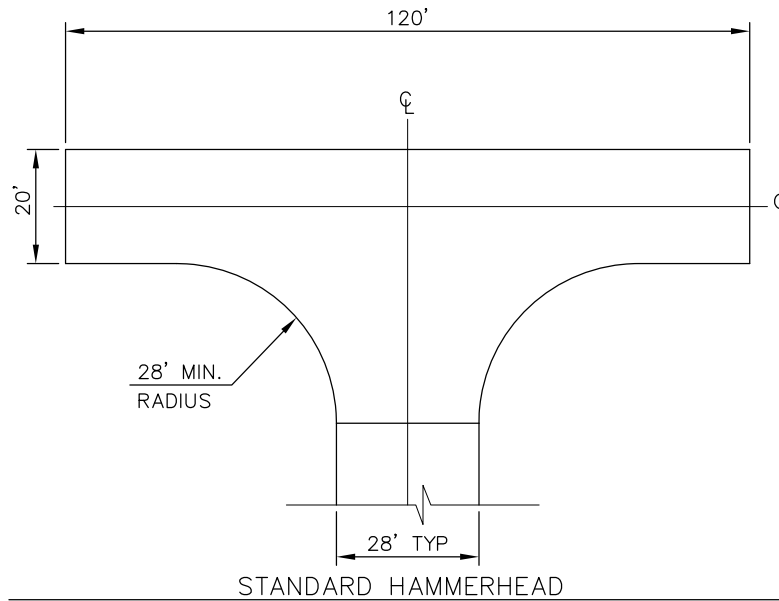
Date Adopt. 11/01/12

Date Rev. ----

DWG. NO.

Dwg. Name: ST-7 Cul-de-Sac.dwg

**ST-7**



NOTES:

1. HAMMERHEAD WIDTH RANGES BETWEEN 90' TO 120', DEPENDENT UPON ROADWAY LENGTH. SIDEWALKS AND UTILITIES MAY BE LOCATED WITHIN PUBLIC EASEMENTS.
2. ALTERNATIVE DESIGNS BY APPROVAL OF CITY ENGINEER AND FIRE MARSHAL.
3. TURNAROUND FACILITIES CANNOT BE LOCATED ON DRIVEWAYS.
4. ALL STREET ENDS SHALL BE SIGNED PER THE MUTCD.
5. NO PARKING SIGNS REQUIRED IN TURNAROUND AREAS.



**City of Astoria**  
**Public Works Department**  
 1095 Duane Street

**Hammerhead Detail**

Date Adopt. 11/01/12

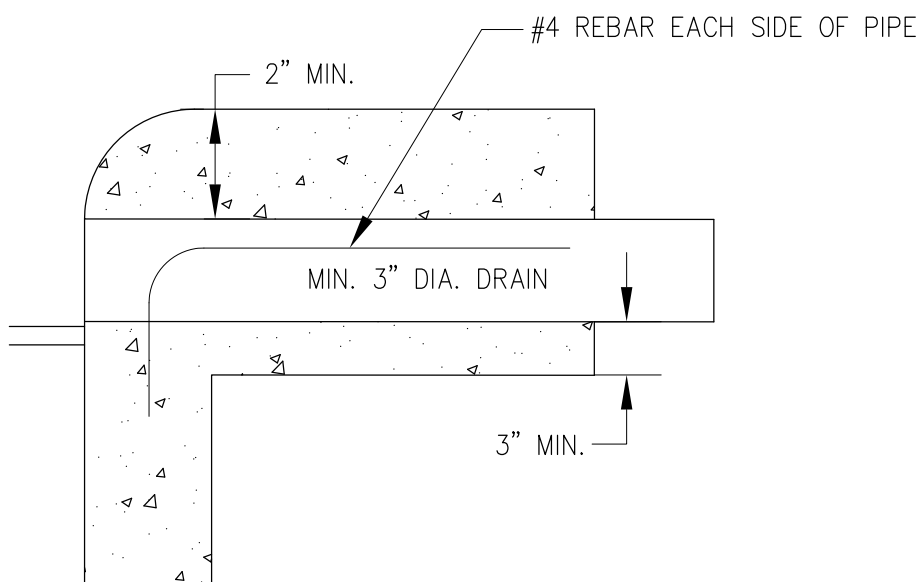
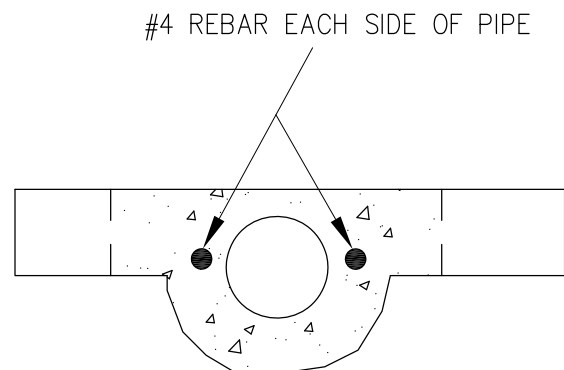
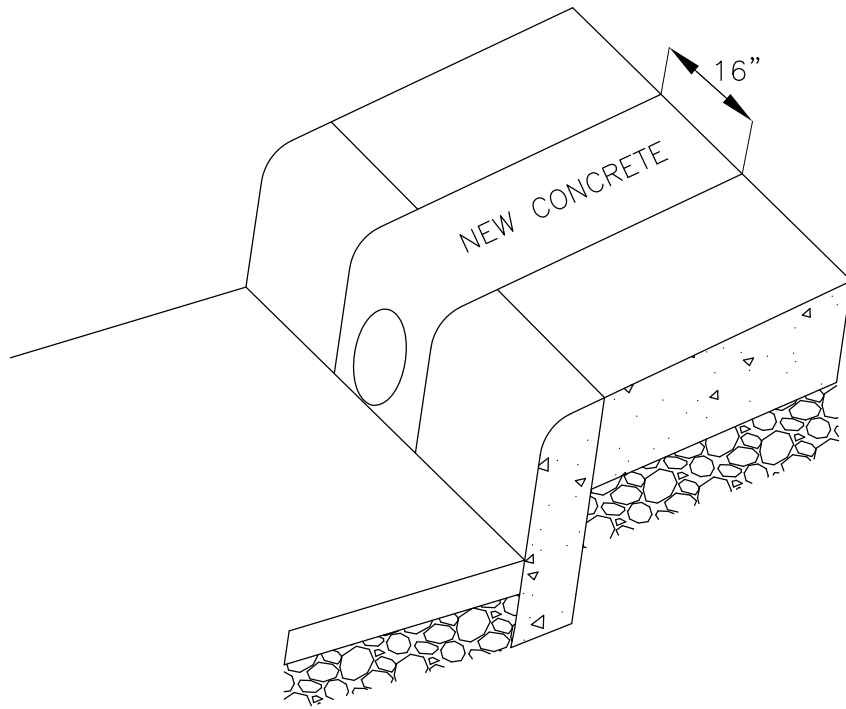
Date Rev. ----

DWG. NO.

Dwg. Name: ST-8 Hammerhead.dwg

**ST-8**





- NOTE:
1. DRAINS WILL BE SIZED ACCORDING TO FLOW FROM ROOF DRAINS, WHERE REQUIRED MULTIPLE RAIN DRAINS SHALL BE INSTALLED.
  2. SIDEWALKS SHALL BE SAWCUT.



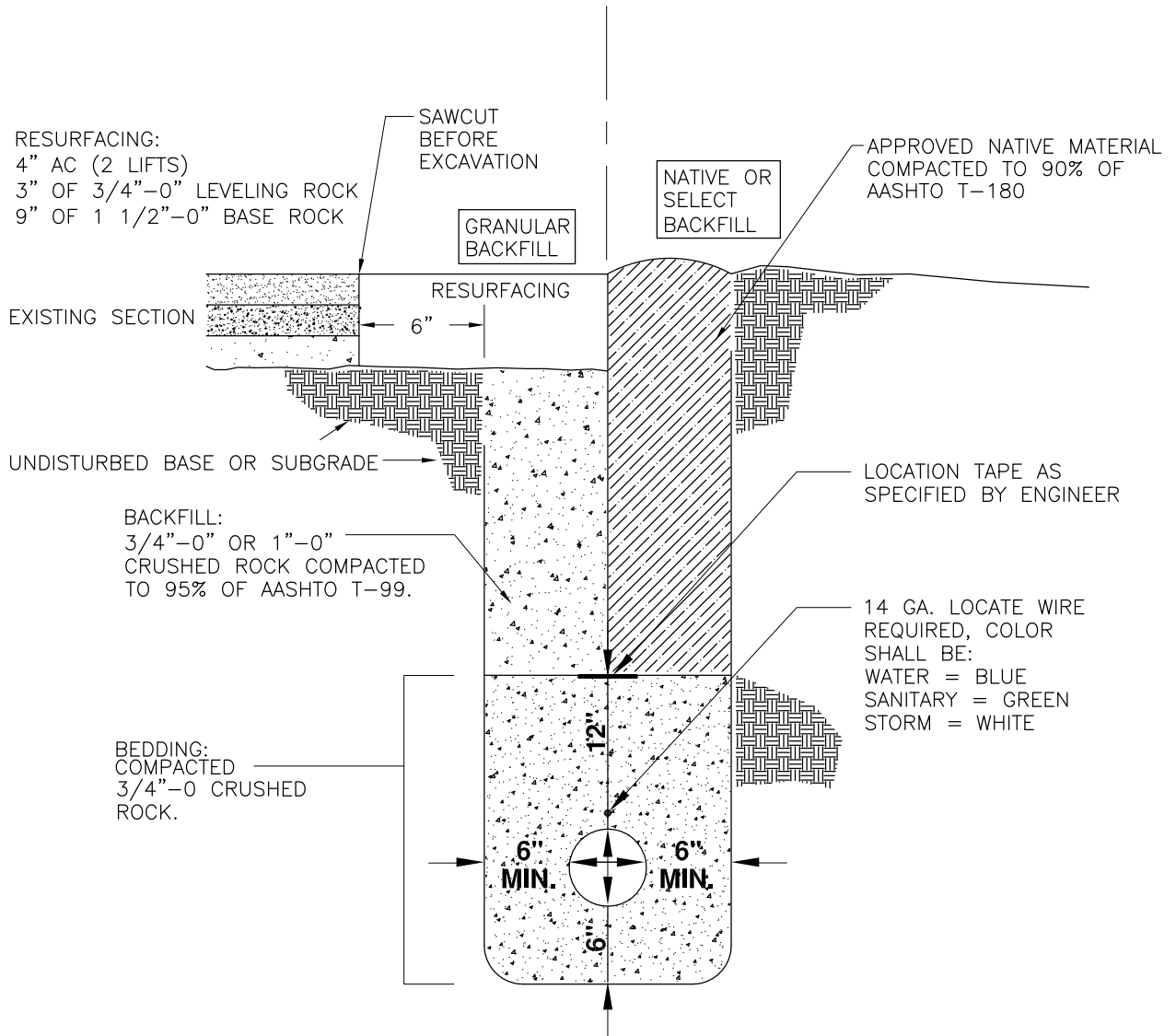
**City of Astoria**  
**Public Works Department**  
 1095 Duane Street

**Curb Rain Drain Detail**

<b>Date Adopt.</b> 11/01/12	<b>Date Rev.</b> 11/13/15	<b>DWG. NO.</b>
<b>Dwg. Name:</b> ST-9 Curb Rain Drain.dwg		<b>ST-9</b>

IN PAVED AREAS

LANDSCAPED OR UNIMPROVED AREAS



NOTE:

1. CONTRACTOR SHALL TACK EDGES OF TRENCH AND PLACE AND COMPACT ASPHALT IN ACCORDANCE WITH ODOT STANDARD SPECIFICATIONS.
2. REPLACE CONCRETE ROADWAY AS ENCOUNTERED, EQUIVALENT SECTION. CONCRETE TO BE CLASS 3300, 1 1/2" MAX AGGREGATE.
3. IN ROADWAY SHOULDERS AND GRAVEL DRIVEWAYS IN RIGHT-OF-WAY USE GRANULAR BACKFILL AND SURFACE WITH 6" OF 3/4"-0" CRUSHED ROCK.



**City of Astoria**  
**Public Works Department**  
1095 Duane Street

**Utility Trench Detail**

Date Adopt. 11/01/12

Date Rev. 11/20/15

DWG. NO.

Dwg. Name: UT-1 Utility Trench.dwg

**UT-1**