

CAST IRON VALVE BOX  
"VANCOUVER" STYLE,  
OLYMPIC FOUNDRY  
MODEL NO. 910

FINISHED GRADE

VALVE BOX TO BE  
ENCASED IN CONCRETE  
IF NOT IN PAVED AREA

14g. UNDERGROUND BLUE  
LOCATE WIRE BROUGHT  
TO SURFACE BETWEEN  
VALVE BOX AND PVC

6" D3034 PVC PIPE

AMERICAN FLOW CONTROL  
(AFC-VALVES) UNION OR TYLER  
DOMESTIC FITTINGS

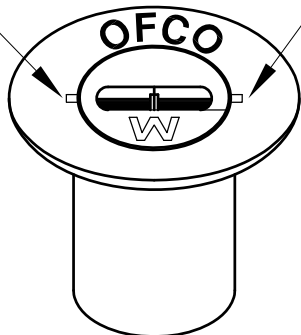
WATER

MAIN

NATIVE SOIL OR 6"  
OF CRUCHED ROCK

CONCRETE BLOCK-MINIMUM 4" THICK

NOTCH 1/16" DEEP AND  
3/8" LONG INDICATING  
DIRECTION OF MAIN



"VANCOUVER"  
VALVE BOX

### NOTES:

1. VALVE BOXES SHALL BE PLUMB & CENTERED DIRECTLY OVER THE VALVE NUT IN A VERTICAL POSITION.
2. VALVE BOX TOP SHALL BE ADJUSTED TO MEET FINISHED GRADE.



**City of Astoria**  
**Public Works Department**  
1095 Duane Street

### Water Valve Detail

Date Adopt. 10/31/12

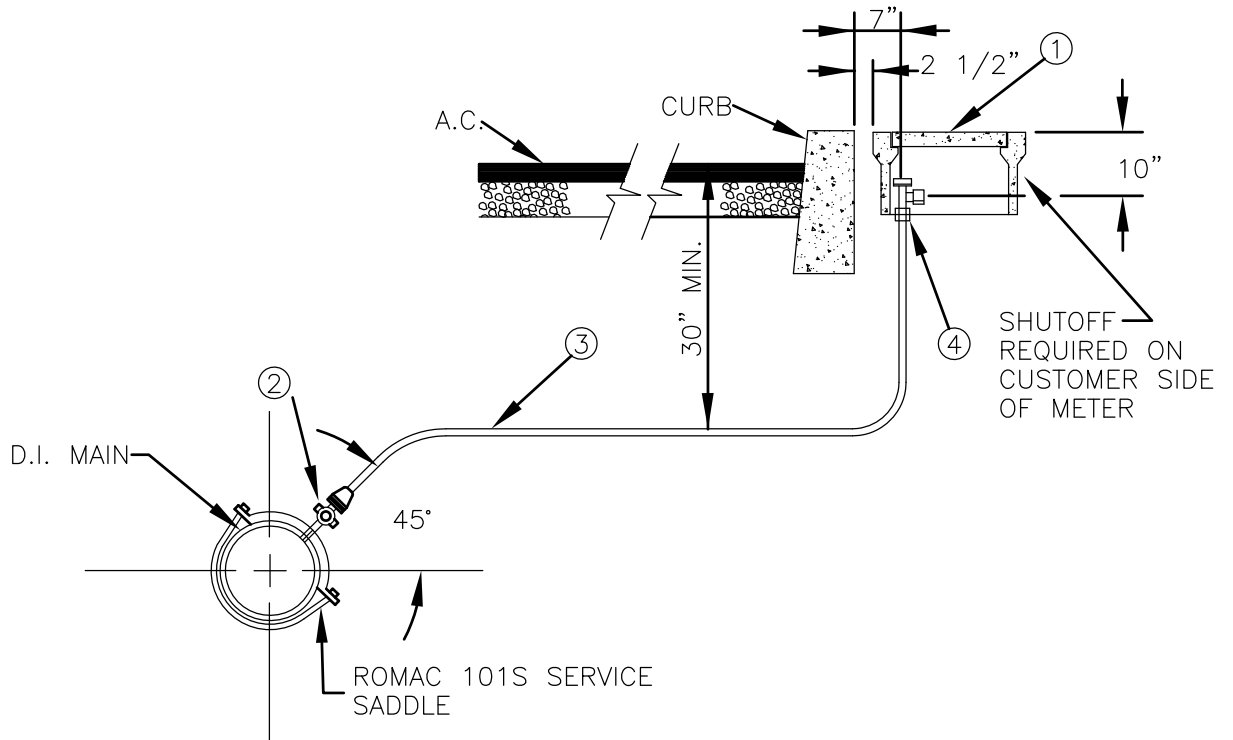
Date Rev. 11/15/12

DWG. NO.

Dwg. Name: W-1 Water Valve.dwg

**W-1**





**MATERIALS:**

1. BROOKS METER BOX, BODY NO. 36MB (3/4") OR 37MB (1"), CONCRETE BODY, AND COVER WITH CAST IRON HINGED LID 36H4 (3/4") OR 37H4 (1"). FOR IRRIGATION APPLICATIONS OR UPON ENGINEER'S APPROVAL USE A CARSON 3/4" METER BOX: 1419-12 (GREEN) BODY WITH A 1419-3 (GREEN) NO BOLT FLUSH COVER.
2. MUELLER CORP. STOP NO. H-15028N
3. 3/4" & 1" CTS SDR 9 (200 PSI) PE TUBING OR SOFT TEMPER, TYPE 'K' COPPER TUBING COMPLYING WITH ASTM B-88 UPON ENGINEERS APPROVAL.
4. MUELLER ANGLE METER STOP NO. H-14258N (3/4" AND 1")

**NOTES:**

1. SUBSTITUTES FOR ANY MATERIALS SHOWN SHALL BE APPROVED BY THE CITY ENGINEER.
2. ALL PIPE AND STRUCTURE ZONES SHALL BE BACKFILLED USING 3/4" MINUS CRUSHED AGG. AND COMPACTED TO 95% MAX. DENS. AS DETERMINED BY AASHTO T-180.
3. METER BOX SHALL BE CENTERED OVER THE COMPLETED METER ASSEMBLY.



**City of Astoria**  
**Public Works Department**  
 1095 Duane Street

**3/4" & 1" Water Service Detail**

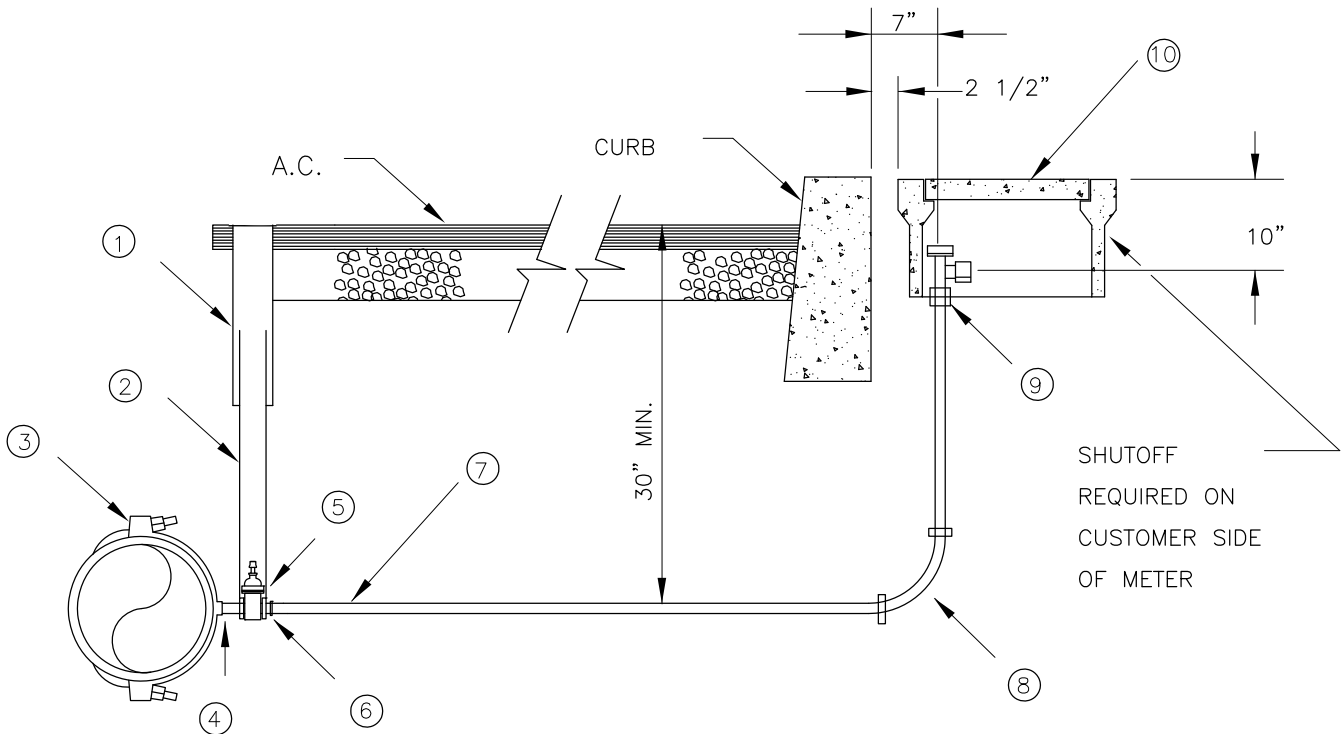
Date Adopt. 11/01/12

Date Rev. 11/26/12

DWG. NO.

Dwg. Name: W-3 | Inch Water Service.dwg

**W-3**



NOTES:

1. #910 VANCOUVER STYLE 18" VALVE BOX TOP WITH COVER
2. 6" PVC D3034 SEWER PIPE
3. PIPE SIZE-ROMAC 202S STYLE SERVICE SADDLE DOUBLE STRAP STAINLESS STEEL-TAP 2" I.R. THREAD.
4. 2" BRASS CLOSE NIPPLE
5. 2" C.I. GATE VALVE WITH 2" OPERATING NUT, BOTH ENDS FEMALE I.P. THREADS-AMERICAN FLOW CONTROL
6. 2" MUELLER COMPRESSION #110 COUPLING, MALE I.P. THREADS #15428.
7. 2" HDPE TUBING CTS SIZE
8. IF NEEDED 2" QUARTER BEND UNION, COMPRESSION CONNECTOR CTS O.D. TUBING BOTH ENDS-#H15526
9. 2" GROUND KEY ANGLE METER STOP MUELLER 110 COMPRESSION, FOR CTS O.D. TUBING, METER FLANGE 180 TURN CHECK-LOCK WING-#H14277.
10. BROOKS PRODUCTS 2" CONCRETE METER BOX 65H4 WITH C.I. HINGED READING LID.



**City of Astoria**  
**Public Works Department**  
 1095 Duane Street

**2 Inch Water Service Detail**

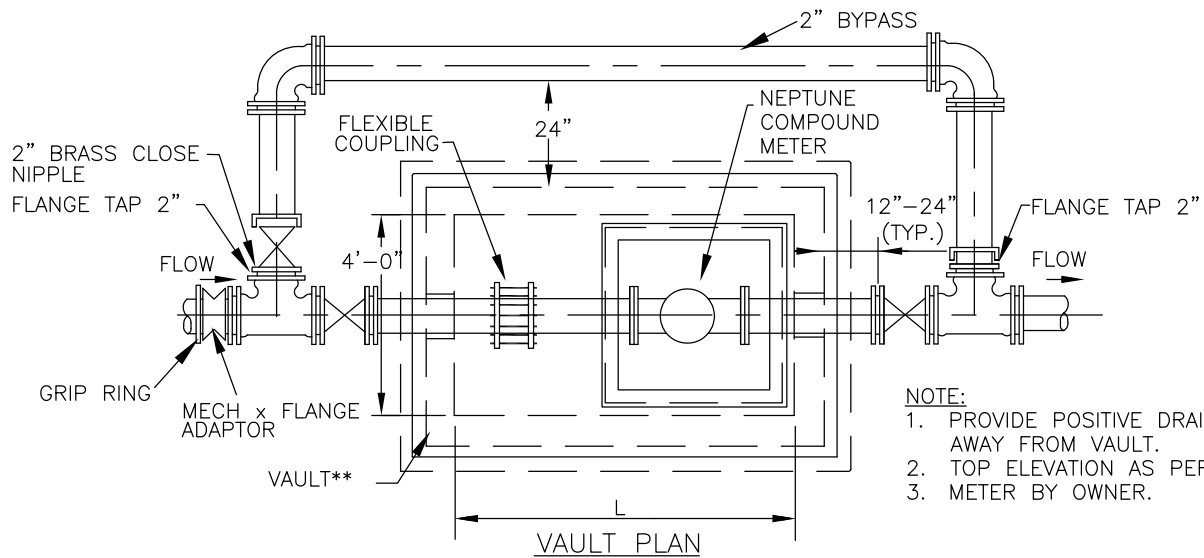
Date Adopt. 11/01/12

Date Rev. ----

DWG. NO.

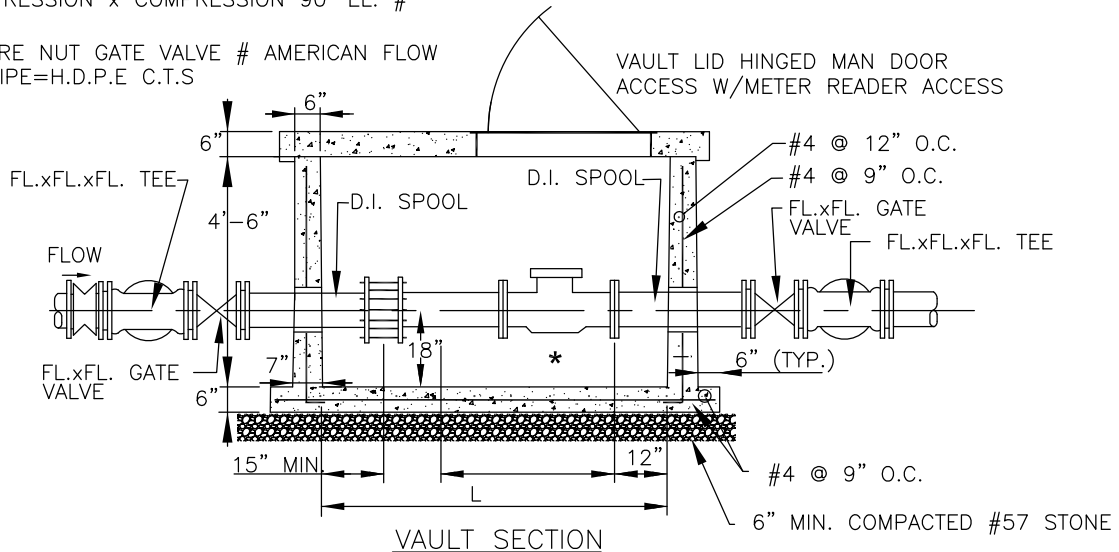
Dwg. Name: W-4 2 Inch Water Service.dwg

**W-4**



- NOTE:**
1. PROVIDE POSITIVE DRAINAGE AWAY FROM VAULT.
  2. TOP ELEVATION AS PER PLAN.
  3. METER BY OWNER.

2" BYPASS (SIZE OF BYPASS TO BE DETERMINED BY ENGINEER).  
 2-2" COMPRESSION x I.P. MALE #H15428-2"  
 2-2" COMPRESSION x COMPRESSION 90° EL. # H15526-2"  
 1-2" SQUARE NUT GATE VALVE # AMERICAN FLOW  
 CONTROL PIPE=H.D.P.E C.T.S



VAULT\*\* MINIMUM 1 FT. CLEARANCE ON FLANGED ENDS AND SIDES OF 3" & 4" METERS .  
 MINIMUM 2 FT. CLEARANCE ON FLANGED ENDS AND SIDES OF 6" AND LARGER METERS.  
 VAULT TO HAVE ATTACHED LADDER IF OVER 3' DEEP WITH 3' REMOVABLE SECTION THAT WILL EXTEND ABOVE VAULT LID.  
 METER TO BE SET 18" FROM TOP OF LID.  
 METER READER ACCESS DOOR TO BE CENTERED EVER METER REGISTER.  
 FLOOR TO HAVE DRAIN OR SUMP PUMP MAINTAINED BY CUSTOMER.  
 VAULT TO BE SET AT FINISHED GRADE.  
 \*METER MIN.1' ABOVE BOTTOM OF VAULT  
 CONCRETE PAD AROUND GATE VALVE BOXES, SEE W-1



**City of Astoria**  
**Public Works Department**  
 1095 Duane Street

**3 to 10 Inch Water Service Detail**

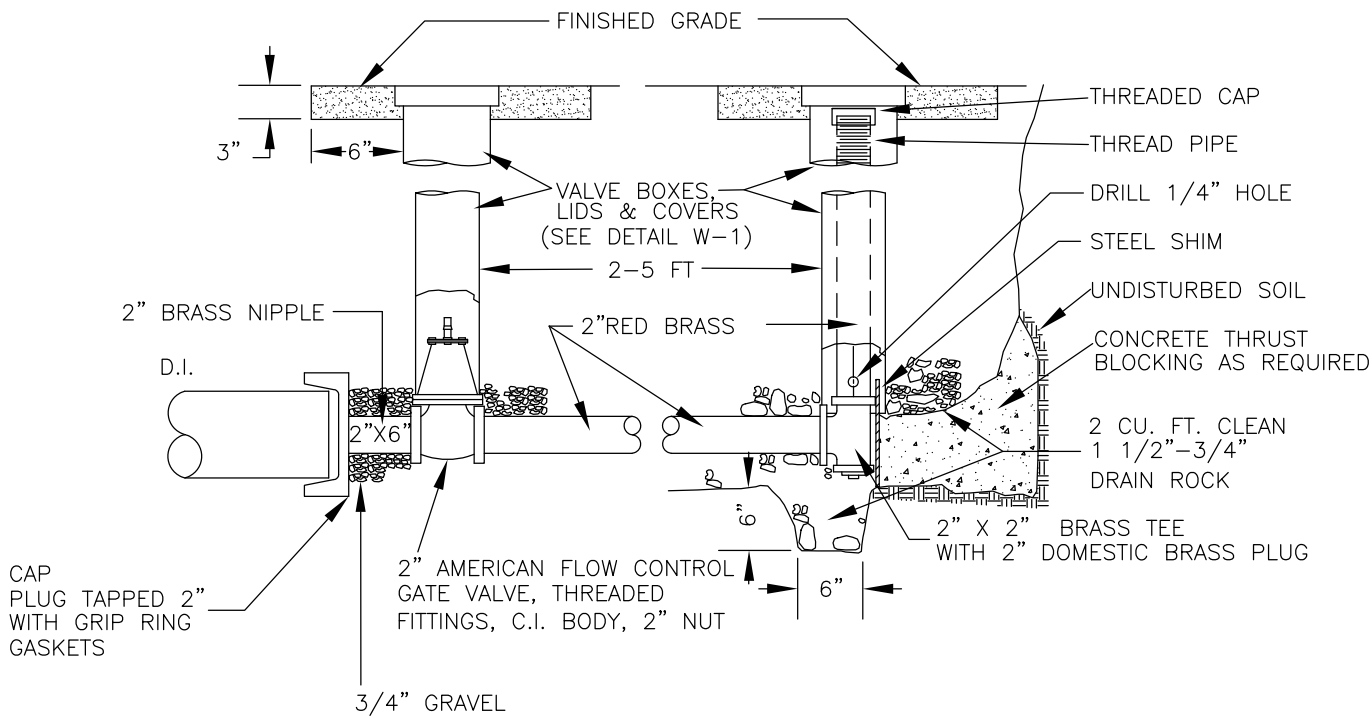
Date Adopt. 11/01/12

Date Rev. ----

DWG. NO.

**W-5**

Dwg. Name: W-5 3 to 10 Inch Water Service.dwg



- NOTES:
1. VALVE BOX SHALL BE PER STANDARD DETAIL W-1.
  2. BLOW-OFF UNIT SHALL BE GRAVEL BACK FILLED AND COMPACTED AS SHOWN.



**City of Astoria**  
**Public Works Department**  
 1095 Duane Street

**Blow Off Detail**

Date Adopt. 11/01/12	Date Rev. ----	DWG. NO.
Dwg. Name: W-6 Blow Off.dwg		<b>W-6</b>